

ford**cougar**<sup>2</sup>





## interior features

Luxurious, fine-grained leather seat-facing trim in Ebony Black is available as part of the 'X' Pack on 24V.

CFC-free air conditioning with semi-automatic temperature control helps you remain cool and refreshed.

Door mirrors are electrically-operated and heated for added convenience.



## exterior features

The distinctive new front bumper and spoiler identify Ford Cougar<sup>2</sup> at a glance.

Front fog lights are both functional and attractive (standard on 24V).

## driving dynamics

At the heart of Ford Cougar<sup>2</sup> lies a choice of two engines: a high-tech, all-alloy 2.5-litre quad cam V6, or the state-of-the-art 2.0-litre, 16-valve Zetec engine. Both are tuned to deliver flexible performance and tractable low-end torque.

Four-wheel ventilated disc brakes provide confident stopping power with reduced fade.

Four-channel anti-lock braking and TCS traction control (TCS standard on 24V, cost option on 16V) are designed to help you avoid potential hazards.

Low-friction MacPherson strut independent front suspension boosts steering agility and enhances ride comfort.

Short-throw gear lever and light-action clutch aid precise shifting through the close-ratio gearbox.

Ford Cougar<sup>2</sup>'s fully integrated passenger restraint system includes driver and front passenger airbags\*, as well as side airbags\*, for a class-leading approach to safety.

**\* Note: A rear-facing child seat should never be placed in the front passenger seat when the Ford vehicle is equipped with a front passenger's or side airbags.**

# be different



One look says it all. The Ford Cougar<sup>2</sup> is true to its heritage as a real driver's car.

With its unique styling and uncompromising attention to comfort and safety, matched to exhilarating driving dynamics, the Ford Cougar<sup>2</sup> will satisfy the most demanding enthusiast.

Outside, distinctive headlights and a unique front grille and bumper ensure a striking image on the road. Dramatic 16" 6-spoke alloy wheels and tarmac-gripping tyres complete the head-turning picture.

Settle into the body-hugging sports seats, clad in the finest leather (cost option on 24V) or luxurious fabric trim. Grip the specially designed leather-wrapped four-spoke steering wheel.

And survey the unique instrument panel with its fresh graphics, read-at-a-glance instruments and special satin aluminium highlights.

The Ford Cougar<sup>2</sup>. The open road awaits.

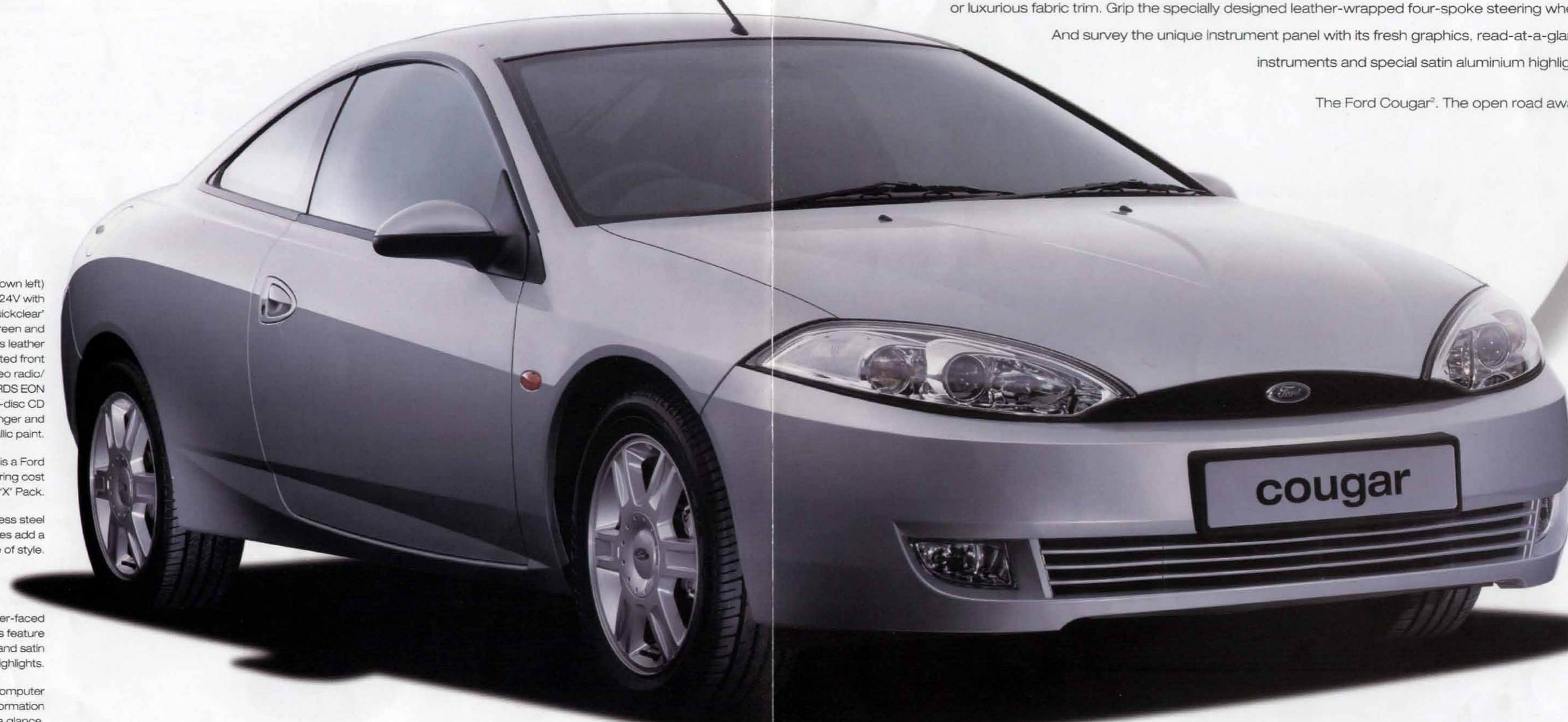
Vehicle interior (shown left) is a Ford Cougar<sup>2</sup> 24V with cost option 'Quickclear' heated windscreen and 'X' Pack (includes leather seats with heated front seats, stereo radio/CD - Model 6006E RDS EON with built-in 6-disc CD autochanger and metallic paint).

Vehicle shown is a Ford Cougar<sup>2</sup> 24V featuring cost option 'X' Pack.

Brushed stainless steel door kick plates add a unique sense of style.

New silver-faced instruments feature revised graphics and satin aluminium highlights.

Electronic trip computer displays useful information at a glance.



# model choice

With a choice of two smooth and responsive engines, three high-gloss paint colours and two matching interior trims, Ford Cougar<sup>2</sup> helps turn your dreams into reality.



## body colour and trim availability

**Solid Body Colours**  
Ebony Black

**Metallic Body Colours\***  
Silver Frost  
Amazon Green

Model	Seat Trim			
16V	Diamond fabric	G	G	G
24V	Diamond fabric	G	G	G
24V 'X' Pack*	Leather	E	E	E

### SEAT FABRIC COLOUR KEY:

**G – Dark Graphite**    **E – Ebony Black**

\*Metallic paint and 'X' Pack are both options at extra cost.

Luxurious Diamond cloth in Dark Graphite.



Leather seat-facing trim in Ebony Black.

Ebony Black



Silver Frost



Amazon Green



**Note:** The car images used are to illustrate body colours only and may not reflect current build levels. Colours and trims reproduced within this brochure may vary from the actual colours, due to the limitations of printing processes used.

## performance and economy

	CO <sub>2</sub> emissions (g/km) <sup>†</sup>	Fuel consumption in L/100 km (mpg) <sup>†</sup>			Performance (Ford test figures)		
		Urban	Extra Urban	Combined	Max. speed mph	0-60 mph (secs)	30-50 mph <sup>*</sup> (secs)
<b>3-door Cougar</b>							
2.0i 16V	204	12.1 (23.3)	6.4 (44.1)	8.5 (33.2)	130	9.6	7.9
2.5i V6 24V	236	14.1 (2.0)	7.4 (38.2)	9.8 (28.8)	140	8.3	6.3
2.5i V6 24V auto	250	15.1 (18.7)	7.7 (36.7)	10.4 (27.2)	128	9.7	n/a

<sup>\*</sup>In 4th gear.

<sup>†</sup>All CO<sub>2</sub> emissions figures in g/km and fuel consumption figures in L/100 km (mpg) are from officially approved tests in accordance with EEC Directive 1999/100/EC.

The Government CO<sub>2</sub> emissions and fuel consumption test figures shown in the chart do not express or imply any guarantee of the emissions or fuel consumption of a car of the class in question. All the figures are based on tests conducted on vehicles with standard wheels and tyres; optional or accessory wheels and tyres may have an effect on the emissions and fuel consumption of a vehicle.

**Note:** All vehicles are 5-speed manual unless auto stated. All are equipped with a catalytic converter.

### Note:

**Urban:** An engine started from cold in laboratory conditions operated at varying speeds, maximum 31 mph, average 12 mph over a theoretical distance of 2.5 miles.

**Extra Urban:** Conducted immediately after the urban cycle, it consists of half steady speed driving and half varying speed driving, maximum 75 mph over a distance of 4.3 miles.

**Combined:** This is an average of the two parts of the test, weighted by the distances covered in each part.

# technical data

## specifications

### Safety

Airbags – Driver's and front passenger's front and side airbags\*

Brakes – Diagonally-split with dual-line servo-assistance, front and rear discs

Anti-lock brakes – Electronically-controlled with electronic brake-force distribution (EBD)

Fuel cut-off – Inertia switch

Traction control (24V only)

### Exterior Features

#### Exterior Appearance and Styling

Bumpers – Body colour

Door handles – Body colour

Exhaust trim – Oval with brushed finish (24V only)

Wheels – 6½x16 6-spoke alloy (steel mini-spares) with 215/50xVR16 tyres

#### Exterior Functional

Alarm – Perimeter

Door mirrors – Electrically-operated and heated, body colour housings

Fuel flap – Locking with remote release

Tailgate – Electric remote release

immobiliser – Passive Anti-Theft System (PATS)

Locks – Anti-burst

Locks – Remote control central, double locking with illuminated entry

Tinted glass

Vehicle Identification Number (VIN) – Visible

#### Exterior Lighting

Halogen, polycarbonate stone impact resistant headlights, side lights, rear fog lights, reversing lights

Fog lights – Front (24V only)

High-mounted rear brake light

### Interior Features

#### Audio

AM/FM stereo radio/cassette – Model 5000 RDS EON with removable control panel, 'Keycode' anti-theft coding, 4 speakers

#### Carpet and Trim

Door pull handle/armrest

Gear lever knob – Leather-covered

Scuff plates – Brushed stainless steel with Ford oval

### Lighting

Courtesy light – Header-mounted, door-operated with delayed switch-off

Courtesy lights (16V only)

Courtesy lights – Front map-reading lights (24V only)

### Instruments and Controls

Instruments – Speedometer, odometer, tachometer, trip recorder, constant read-out fuel gauge, water temperature gauge

Trip computer

Warning indicators for low fuel, oil pressure, direction indicators, high beam, ignition/alternator, brake failure, handbrake on, airbags, 'lights-on' audible warning

Auxiliary Warning System (24V only)

Master lighting control – Facia-mounted

Steering column – Rake-adjustable

Steering wheel – Leather-trimmed incorporating horn function

### Seats and Seat Belts

Seats – Sports contoured, anti-submerging with fully adjustable front head restraints

Front seat – Driver's electric height adjust

Front seats – Tip/slide

Rear seat – 50:50 split back

Storage pockets – Front seat backs

### Comfort and Convenience

Accessory socket/cigar lighter

Air conditioning – CFC-free with Semi-Automatic Temperature Control (SATC)

Centre console – With pen holder, storage bin, power socket and armrest

Coat hooks – Rear

Mirror – Dipping rear-view

Sunvisors – Two with illuminated mirrors and driver's cover (24V only)

Windows – Front, electrically-operated with illuminated switches and one-shot lowering on driver's side

### Luggage Compartment

Compartment cover – Removable

**\*Note: A rear-facing child seat should never be placed in the front passenger seat when the Ford vehicle is equipped with a front passenger's or side airbags.**

### Optional Equipment, at extra cost

Automatic transmission and cruise control (24V only)

Heated windscreen – 'Quickclear', with heated washer jets

Paint – Metallic

Sunroof – Electrically-operated tilt/slide

### Option Packs

'X' Pack – Leather trim, driver's power seat adjustment, heated front seats, 6006E stereo radio/6-disc CD RDS EON with removable control panel, 'Keycode' anti-theft coding and 4 speakers, metallic paint (24V only)

### Audio

AM/FM stereo radio/CD – Model 6000 RDS EON with removable control panel, 'Keycode' anti-theft coding, 4 speakers

### Illustrations, descriptions and specifications.

This catalogue was correct at the time of going to print. However, Ford policy is one of continuous product development. The right is reserved to change specifications, colours and prices of the models and items illustrated and described in this publication at any time.

For the latest details always consult your Ford Dealer.

**Optional Equipment.** Throughout this publication, wherever a feature is described as being an 'Option' or 'Optional Fitment/Pack' etc, you should assume that it will be at extra cost to the base vehicle, unless specifically stated to the contrary.

All models and colour combinations are subject to availability.

BJN 15049. Designed and produced by Burrows, Shenfield, Essex.

Produced by Werbeagentur Zetwaka.

PN 176503/0104/8.0m/GB

Printed by Heining & Müller, D-45478

Mülheim (Ruhr)

### Published by

**Ford Motor Company Limited,  
Brentwood, Essex, England.**

**Registered in  
England No 235446.**

**FA 1326/5**

February 2001.

© Ford Motor Company Limited.

[www.ford.co.uk](http://www.ford.co.uk)

## engine specifications

	Engine technical features	Maximum power <sup>o</sup>	Maximum torque <sup>o</sup>
<b>2.0i DOHC 16V</b> (Catalyst) 1988 cc	Cylinders – 4 in-line ■ Sequential electronic fuel injection ■ Fully electronic ignition	96 kW (130 PS) at 5600 min <sup>-1</sup> (rpm)	178 Nm at 4000 min <sup>-1</sup> (rpm)
<b>2.5i DOHC V6 24V</b> (Catalyst) 2495 cc	Cylinders – V6 ■ Sequential electronic fuel injection with EEC V engine management system ■ Fully electronic ignition	125 kW (170 PS) at 6250 min <sup>-1</sup> (rpm)	220 Nm at 4250 min <sup>-1</sup> (rpm)

<sup>o</sup> Tested in accordance with ISO 1585

